

Warwickshire Police

Rugby Safer Neighbourhood Team (SNT)

January 2021 News

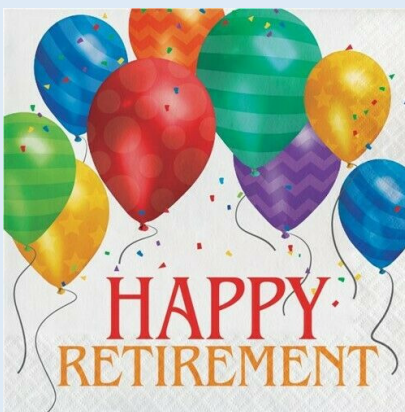


Welcome

Rugby Safer Neighbourhood Team wishes you a happy new year, let's hope that it is not as eventful as 2020. Over December the team have been busy engaging and educating the communities of Rugby over the busy festive period. This month's issue will have useful links in order for enquiries to be dealt with by the most appropriate service. Crime statistics can be found on Warwickshire Police website via link <https://www.ourwatch.org.uk/crime-map>

A new chapter

After 30 years' service to Warwickshire Police our friend and colleague SNT Sergeant Sarah Masters has left. Sarah is starting a new chapter in her life and will sadly be missed by colleagues and the community. We wish Sarah all the best and thank her for her long and valued service.



Community Engagement.



PCSO Fiona Vu, Rugby Town SNT was delighted to receive a Christmas gift from an appreciative member of the public. (SNT office enjoyed the biscuits.) Fiona has become a welcome regular face in the town, well-liked by shoppers and the business community.



Self service - make sure you're not a victim
Most purse thefts are opportunistic - don't give thieves a helping hand!



The charity tuckshop has been a welcome necessity this year at the station. The shop is run by PCSO Jo Jackson and this year the chosen charity is the Warwickshire & Solihull Blood Bikes.



The SNT tuck shop managed to raise £500 of profit and have purchased toys for the charity. Don O'Brien from the blood bikes was pleased with the efforts of the team and grateful of this charitable donation which will see many children receive a present at Christmas where ordinarily they wouldn't.

Operation carried out by Rugby SNT PCs in Rural Villages.

During a proactive operation on the evening for rural drug dealing, a Volvo C30 was stopped on Cathiron Lane, Brinklow after trying to evade police attention and the driver arrested and cautioned for possession of Cannabis.



Warrant executed by Rugby West SNT.

Warrant executed in Plowman Street, in conjunction with two other addresses that were carried out by fellow police officers.

SNT West did the warrant at Plowman Street, with weapons recovered and drugs.

Occupants arrested for possession with intent to supply and others at the other addresses arrested for intelligence to supply and conspiracy to supply drugs.



Above images of weapons which were seized during the warrant.



The above image shows individual opened wraps of tin foil containing cannabis.

Information.

Learn more: actionfraud.police.uk/shoponlinesafely

Ready for the January Sales?

#FraudFreeNewYear 

Want to bag a bargain securely? Listen up...



Your information

Only create an account if necessary or to save you effort if you're going to use that site a lot in the future. Be cautious if the website asks you for details that are not required for your purchase, such as your mother's maiden name or the name of your primary school.

 Where to shop  Payment method  **Your information**  Phishing



Warwickshire
POLICE



#FraudFreeXmas



Watch out for online shopping scams this **Christmas**.

ActionFraud www.actionfraud.police.uk Cyber Aware TO STOP FRAUD



Where to shop

Making a purchase from an online store you haven't used before? Carry out some research first, or ask a friend or family member if they've used the site and about their experiences before completing the purchase.



Your information

Only create an account if necessary or to save you effort if you're going to use that site a lot in the future. Be cautious if the website asks you for details that are not required for your purchase, such as your mother's maiden name or the name of your primary school.



Payment

If you decide to go ahead with the purchase, ensure that the webpage where you enter your payment details is secure (website address starts with "https"). Using a credit card to pay online also means that should the worst happen and your payment details are compromised, your main bank account won't be directly affected.



Phishing

Some of the messages you receive about amazing offers may contain links to fake websites. Not all links are bad, but if you're unsure, don't use the link - go separately to the website. Report any suspicious emails you receive by forwarding them to: report@phishing.gov.uk

Cyberbullying and online harassment



Cyberbullying and online harassment can be extremely distressing. They can be classed as criminal offences but there is lots of help available to support you.

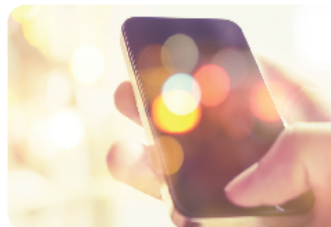
Tips to stay safe online

Think before you post - when posting or commenting on the internet, consider what you say and what effect this may have. Never post comments that are abusive or may cause offence to others.

Keep personal information personal - do not say anything or publish pictures that might later cause you or someone else embarrassment. Be aware of what friends post about you, or reply to your posts, particularly about your personal details and activities.

Make the most of privacy settings - keep your profiles closed, allowing access only to your chosen friends and family.

Report cyberbullying to internet service providers - lots of content on social media that is offensive or upsetting is not necessarily a criminal offence. However, cyberbullying often violates the terms and conditions established by social media sites and internet service providers. Report cyberbullying to the social media site so they can take action against users abusing the terms of service.



Social media help sections can show you how to block users and change settings to control who can contact you. You can get advice and support on using the following social media sites including the ability to report content to them.

- Facebook - facebook.com
- Twitter - twitter.com
- Instagram - instagram.com
- LinkedIn - linkedin.com
- Google+ - google.com
- YouTube - youtube.com
- Pinterest - pinterest.com
- Tumblr - tumblr.com
- Snapchat - snapchat.com

If you believe that you are the victim of an offence, always keep a record of the content, by taking a screenshot, for example. If you are worried that your child or a loved one might be the victim of cyberbullying here are some signs to look out for:

- Low self-esteem.
- Withdrawal from family and spending a lot of time alone.
- Reluctance to let parents or other family members anywhere near their mobiles, laptops etc.
- Finding excuses to stay away from school or work including school refusal.

For further signs and advice visit bullying.co.uk



Beware of telephone scams

We are aware that criminals are trying to exploit the national coronavirus crisis and take advantage of innocent people.

Fraudsters purporting to be from the police or your bank are targeting elderly and vulnerable people to try and steal money from their accounts. The callers will often seem genuine, offering you the opportunity to call them back to prove their identity.

They establish their trust with you by confirming some of your personal details and will then make up a story in which money in your bank account needs to be transferred or withdrawn.

The police or your bank will never:

- Contact you out of the blue and ask for your personal details, including your PIN number, password or account details.



- Ask you to transfer money into another account for fraud reasons.



- Ask you to withdraw cash and hand to someone for safe keeping.



- Send someone to your home to collect cash, bank cards, account details or PIN numbers.



www.warwickshire.police.uk



warwickshirepolice



@warkspolice



@warwickshirepolice



Bike secure, bike locked!

Bikes can be an easy target for thieves - don't give them an easy ride. Basic crime prevention can help prevent it from being targeted.

Always lock your bike when you leave it, even if it's only for a few minutes.

It is worth investing in a good quality lock and, for even better security, use two different types of locks such as a D lock plus a robust chain and padlock.



Always lock it to a secure post or immovable object.

If possible lock your bike at recognised secure bike parking that's well covered by good lighting and CCTV.

Don't forget security starts at the garden gate

Don't leave your bike in the garden if you don't have adequate security.

If you're storing your bike in a shed, garage or outbuilding make sure it has a good quality lock and an alarm.

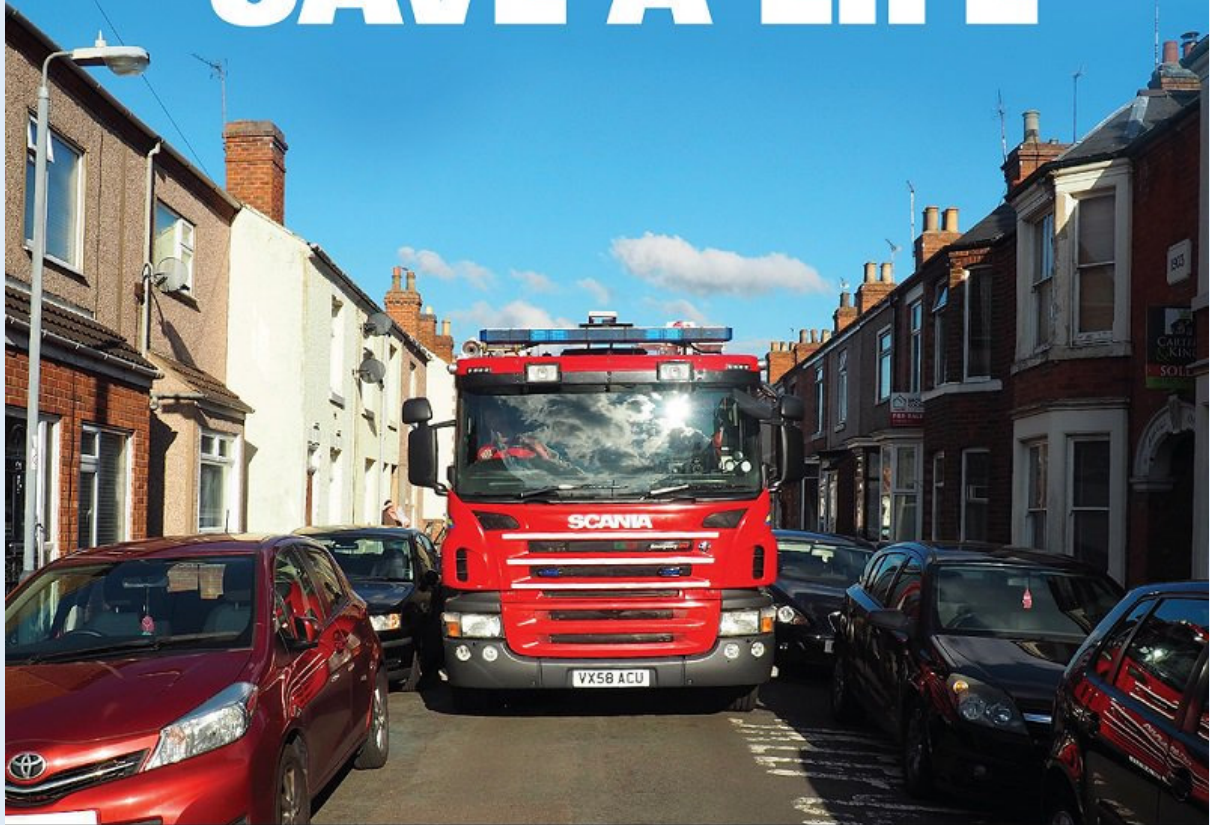
If your bike is kept in a common stairwell, ensure the door is always locked and secure and the door entry system is working.

Make sure you lock the bike too.

 **Worcestershire
POLICE**



PARK IT RIGHT SAVE A LIFE



**If we can't get through
we can't get to you.**

For more information visit www.warwickshire.gov.uk/parkitright



Neighbour disputes.

We would all like to live in peace with our neighbours, but unfortunately that is sometimes not how things work out. Here's what you can do if you are having problems. Unless a crime has been committed or someone is in immediate danger, the police are unlikely to intervene in neighbour disputes. However we'll put you in touch with the groups and organisations who can help.



Examples:

I'm having a dispute with a neighbour about our property boundaries.

If you can't find an amicable solution with your neighbour, we suggest seeking the advice of a solicitor to resolve this. You could also contact your bank, building society, or whoever holds your deeds, to confirm the boundaries.

The following resources may also be of use:

- The Royal Institute of Chartered Surveyors (RICS) www.rics.org
- The Land Registry www.gov.uk

I'm having a dispute with a neighbour about their CCTV camera pointing at my property

Many people are installing closed circuit television (CCTV) as a home security measure as it has proved to be an effective tool in fighting crime. Cameras used for limited household purposes are not subject to the Data Protection Act 1998.

However, if the footage covers areas beyond this, such as neighbouring streets or other properties, problems may arise. There could be issues regarding privacy and harassment if you are being recorded in your home.

In the first instance, speak to your neighbour to see if it's possible to reposition the camera so that it does not point at your property. If this is not successful, and you want to take further action, we recommend seeking legal advice from a solicitor.

- To find a local independent solicitor visit The Law Society web site www.lawsociety.org.uk

This information is provided courtesy of [Ask the Police](#)

My neighbour plays music to an excessive level

A noise complaint can be made to your local council on line.

Rugby Borough Council: www.rugby.gov.uk

If you live in a rented property or local housing then please contact your landlord or the housing association who will be able to provide relevant support and guidance.

Further advice on what to do to resolve a neighbour dispute can be obtained from the Gov.UK website www.gov.uk

This independent website also offers advice www.problemneighbours.co.uk

If you live in a rented property or local housing then please contact your landlord or the housing association who will be able to provide relevant support and guidance.





Contact us!

- ☒ Rugby Rural South & Central. rrc.snt@warwickshire.pnn.police.uk
- ☒ Rugby Rural North. rrn.snt@warwickshire.pnn.police.uk
- ☒ Rugby Town North. rtn.snt@warwickshire.pnn.police.uk
- ☒ Rugby Town West. rtw.snt@warwickshire.pnn.police.uk
- ☒ Rugby Town East. rte.snt@warwickshire.pnn.police.uk
- ☒ Rugby Town Centre. rtc.snt@warwickshire.pnn.police.uk



Rugby Police



@RugbyCops

☎ **999** – In an Emergency

☎ **101** – To report a Crime

“No copyright infringement is intended”